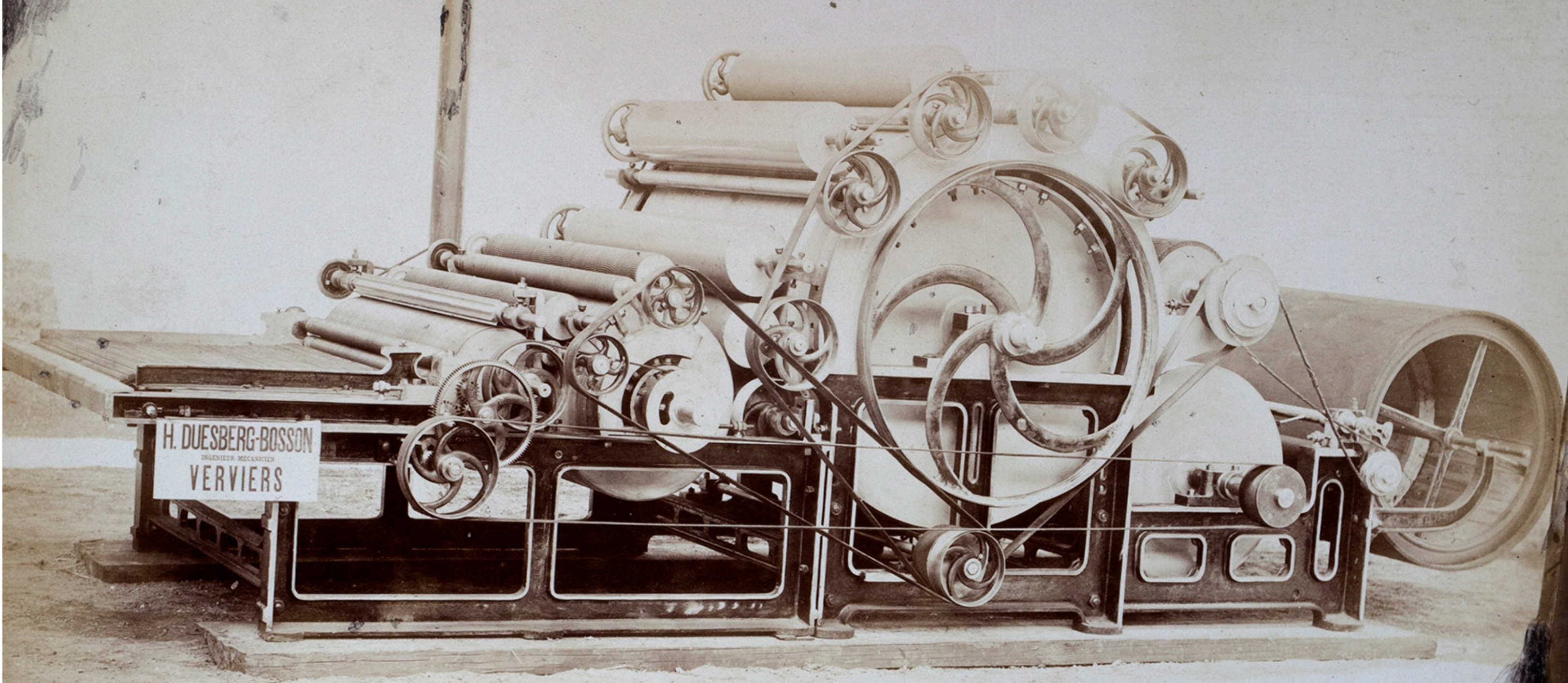


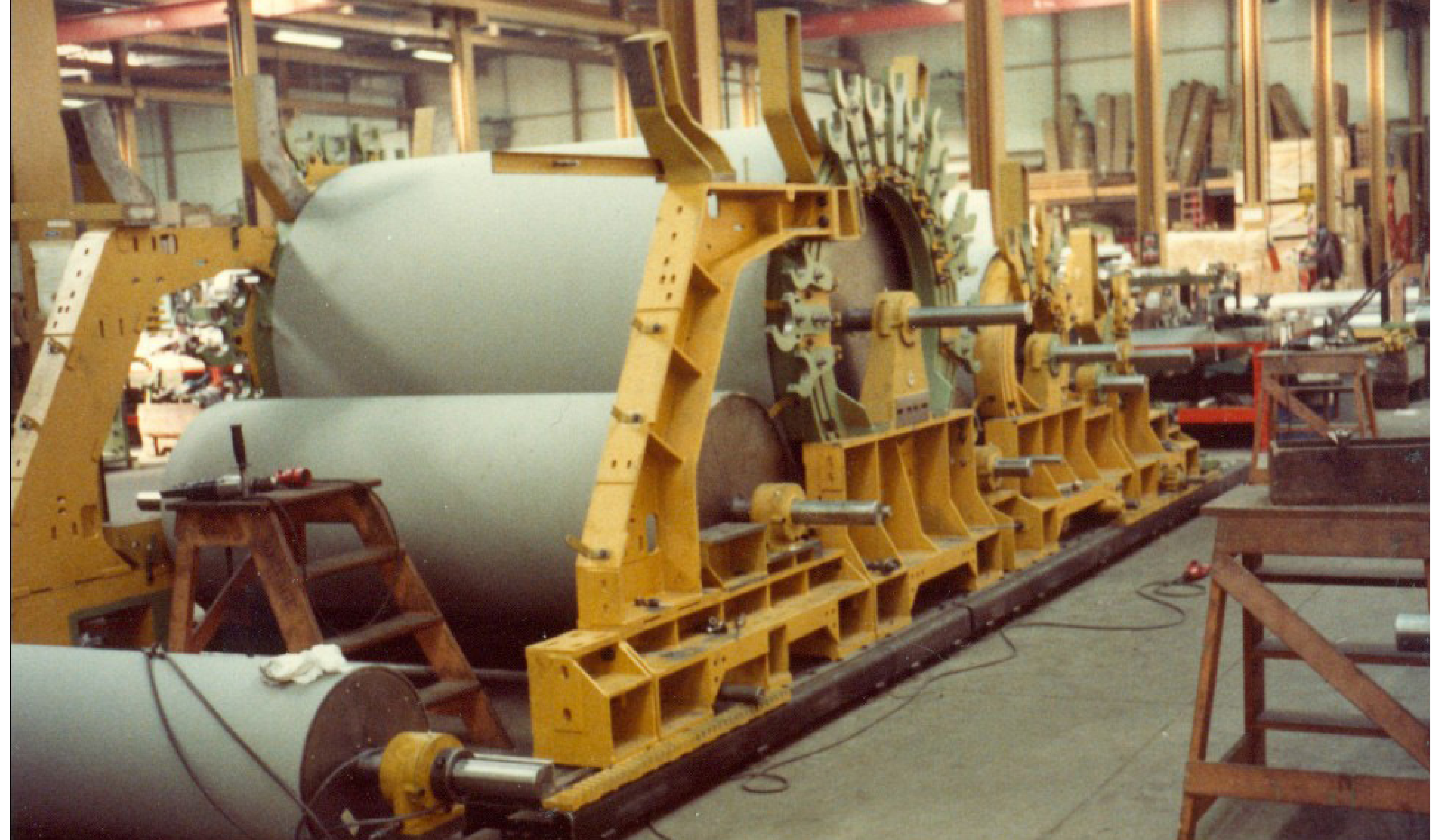


La fabrication de machines textiles

Fleuron de l'industrie textile verviétoise



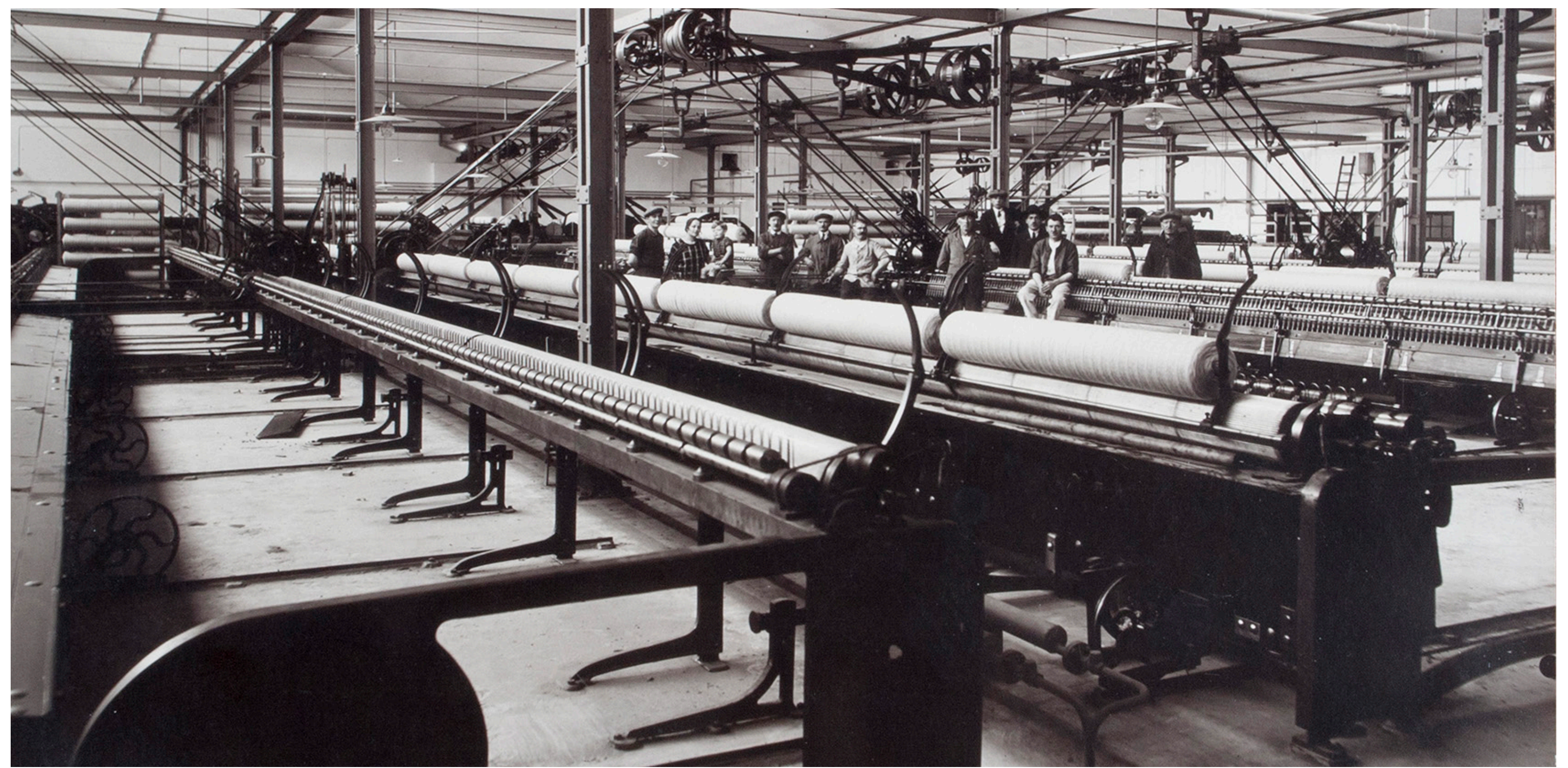
Cardé siècle passé



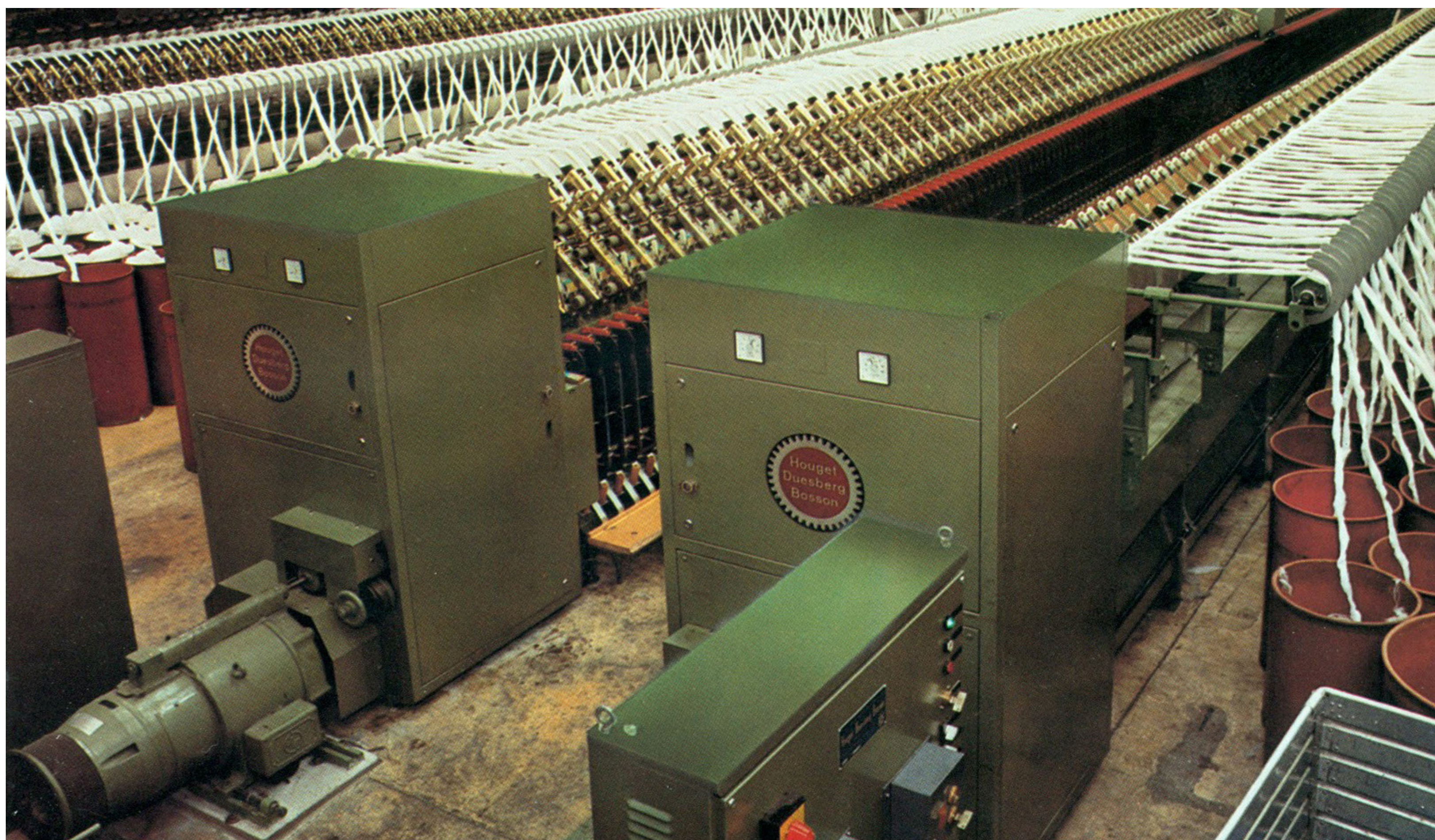
Cardé double peigneur en montage (pour travail «Amiante»)



Cylindre en garnissage



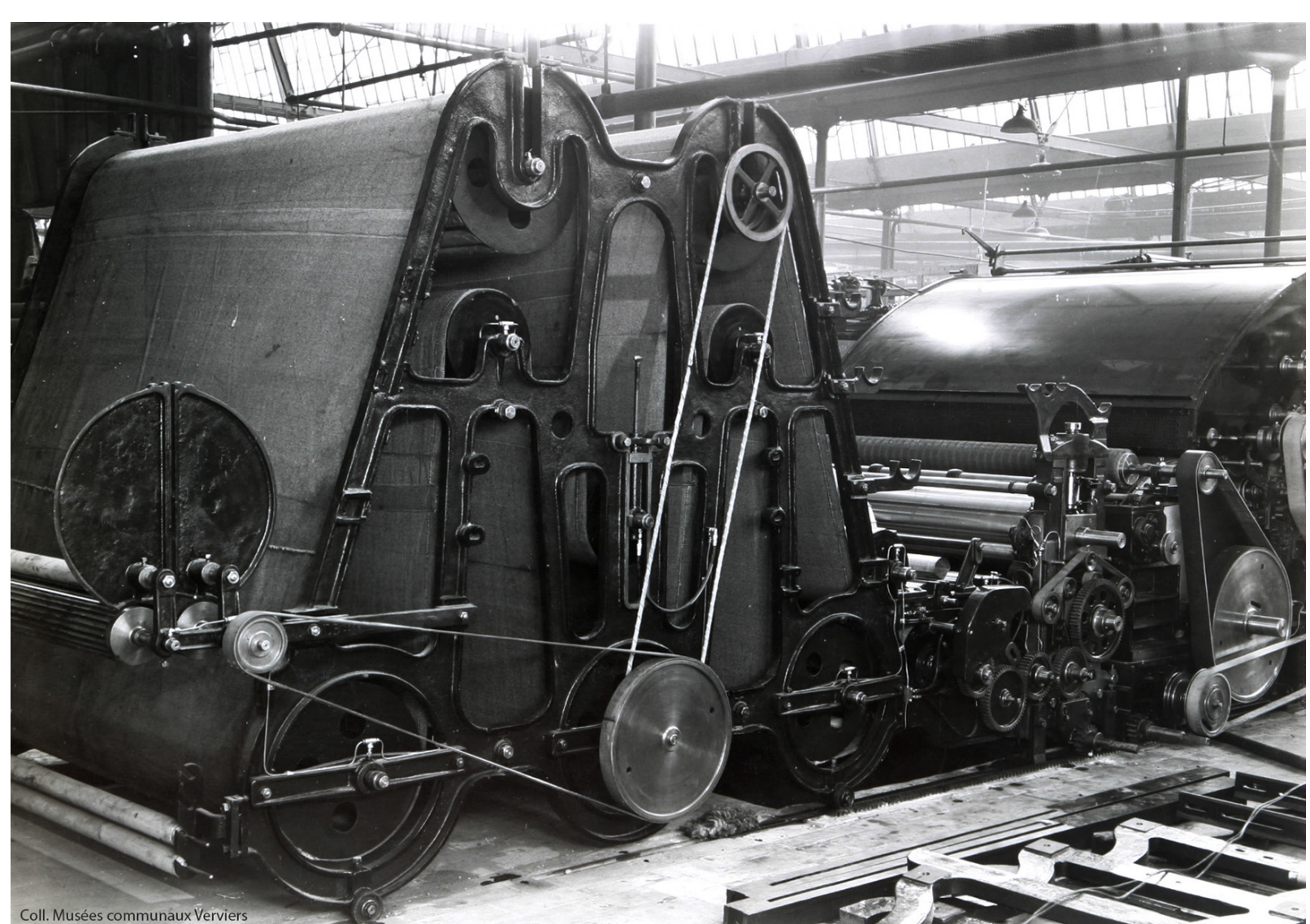
Selfacting / Renvideur



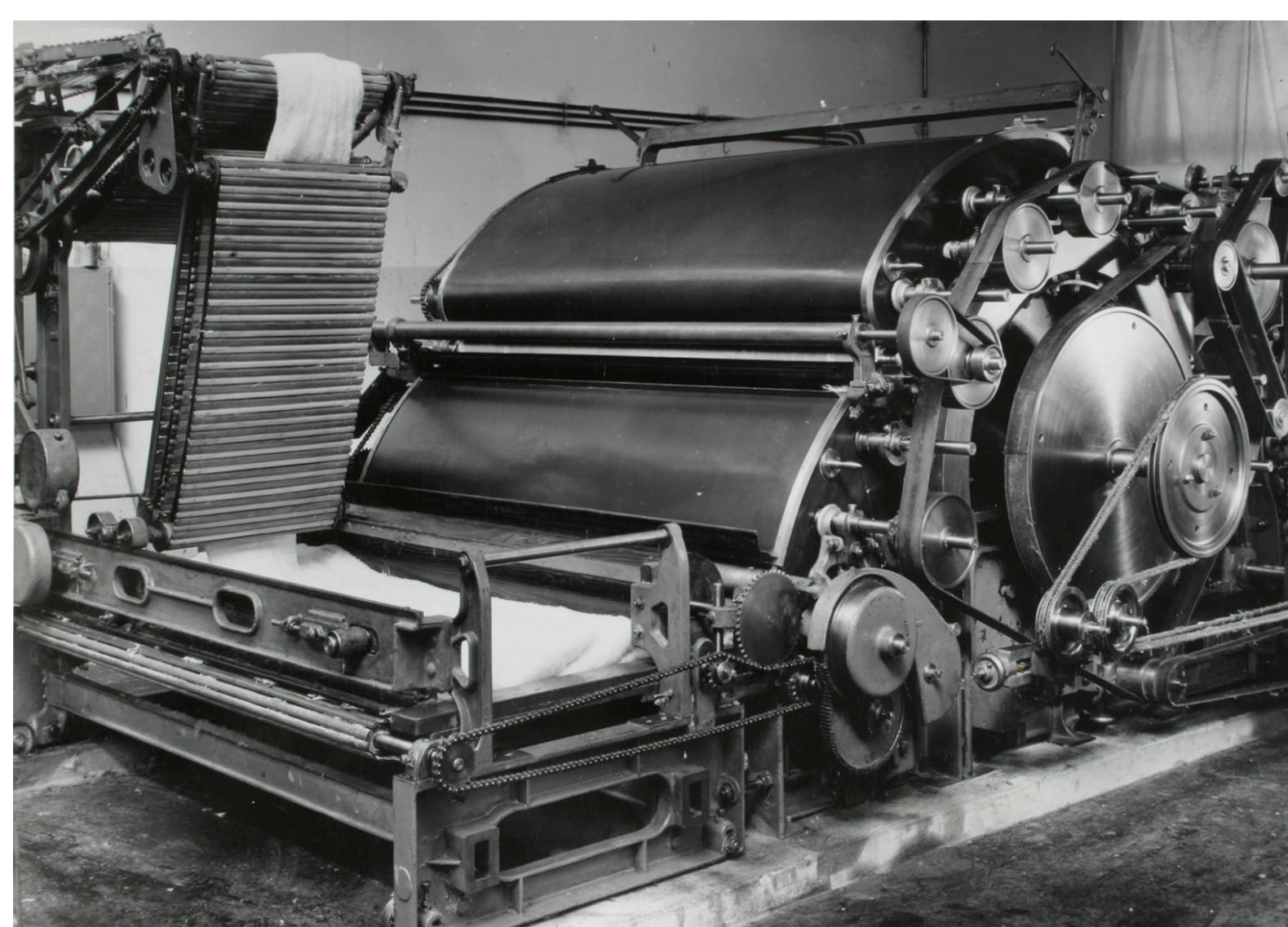
Continu à filer semi-peigné



Continu semi-peigné



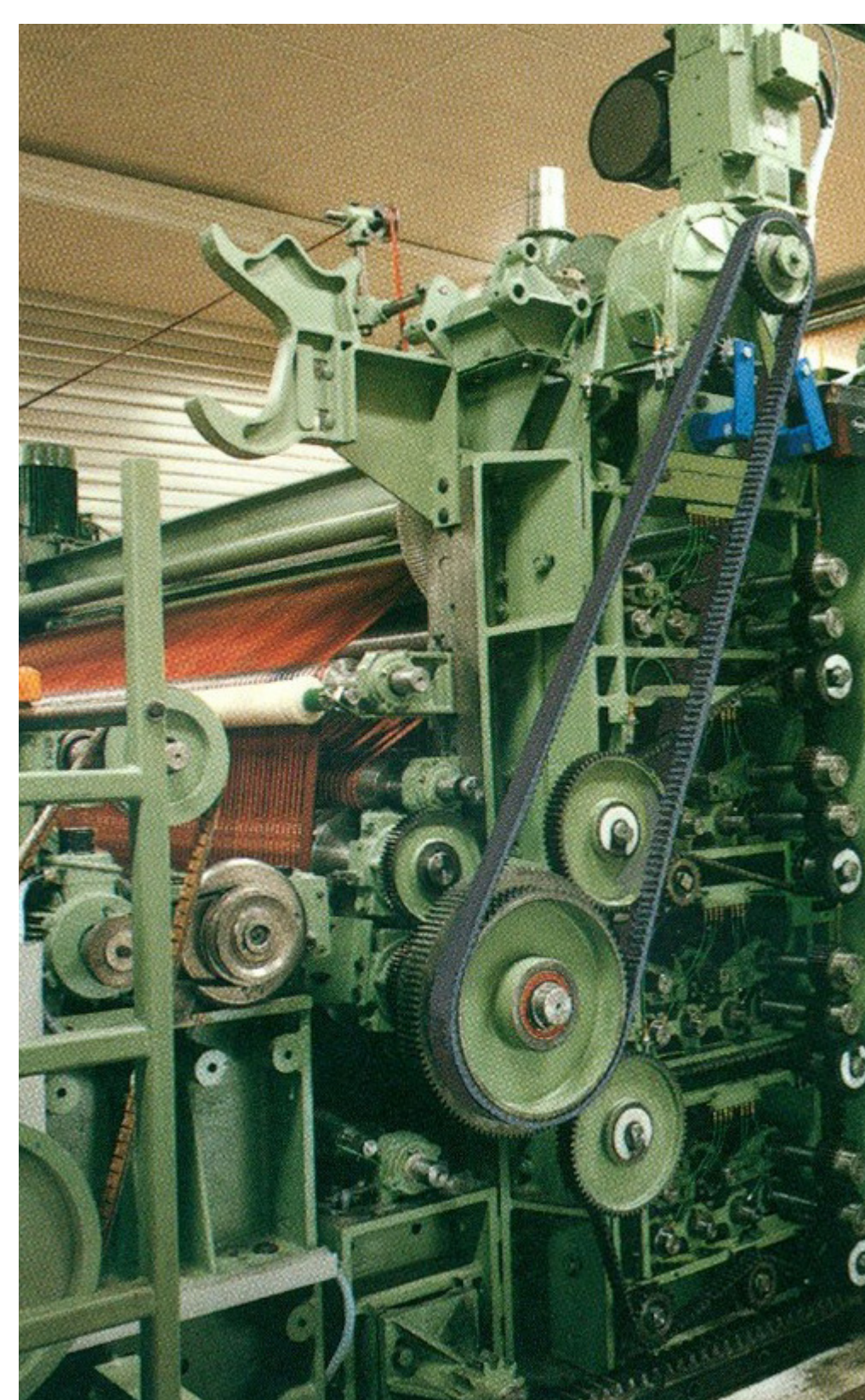
Assortiment de cardé avec sortie sur toile sans fin



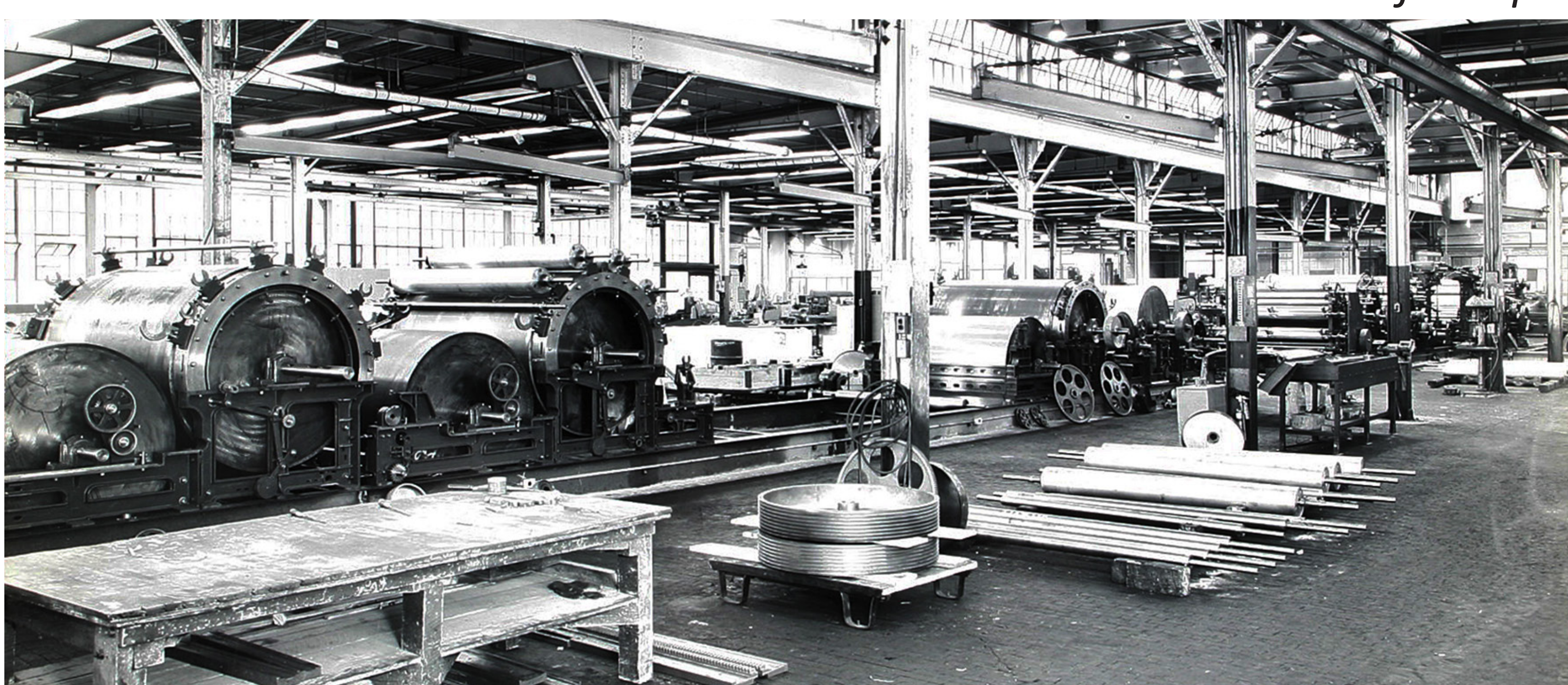
Etableur devant fileuse



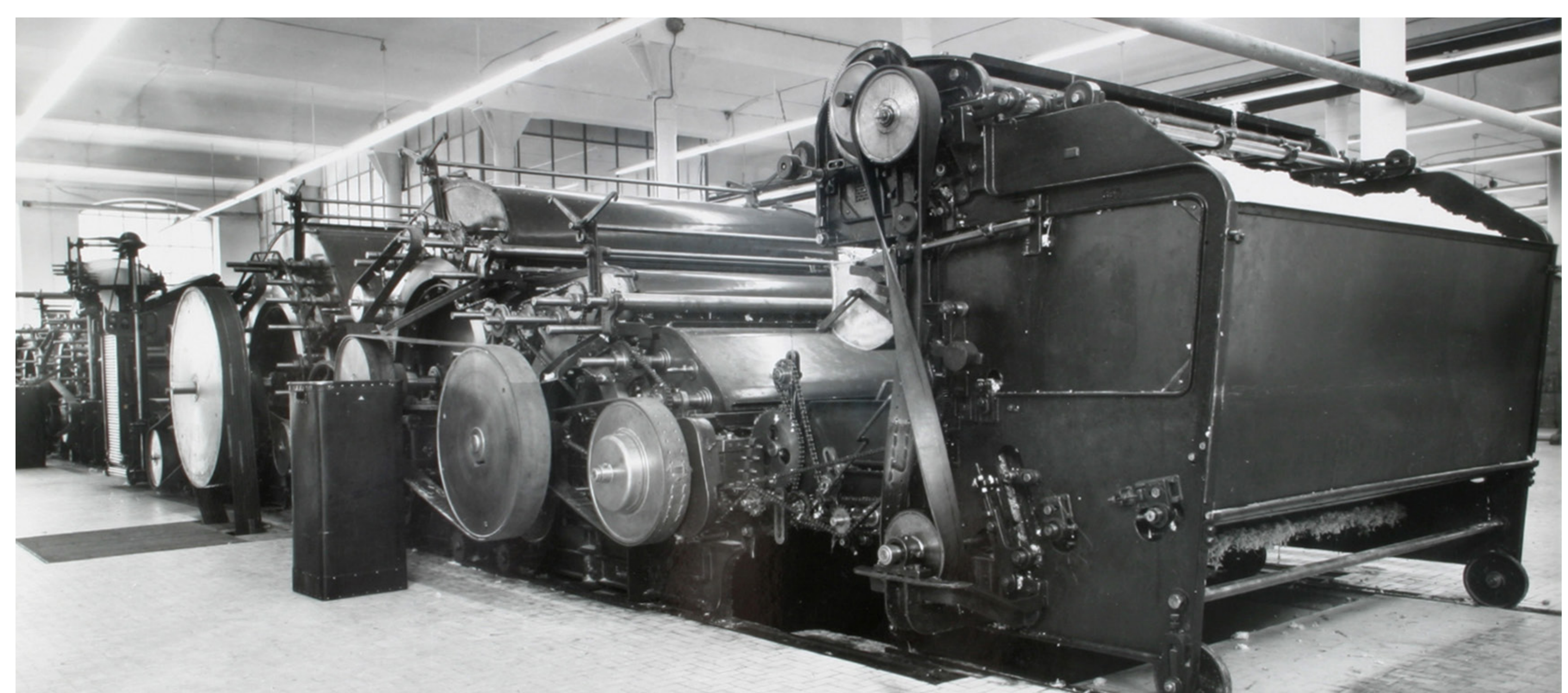
Continu cardé fils tapis



Diviseur + double attracteurs



Halle de montage «assortiments»



Assortiment de cardé

© Musée de la Laine (Verviers) et HDB

